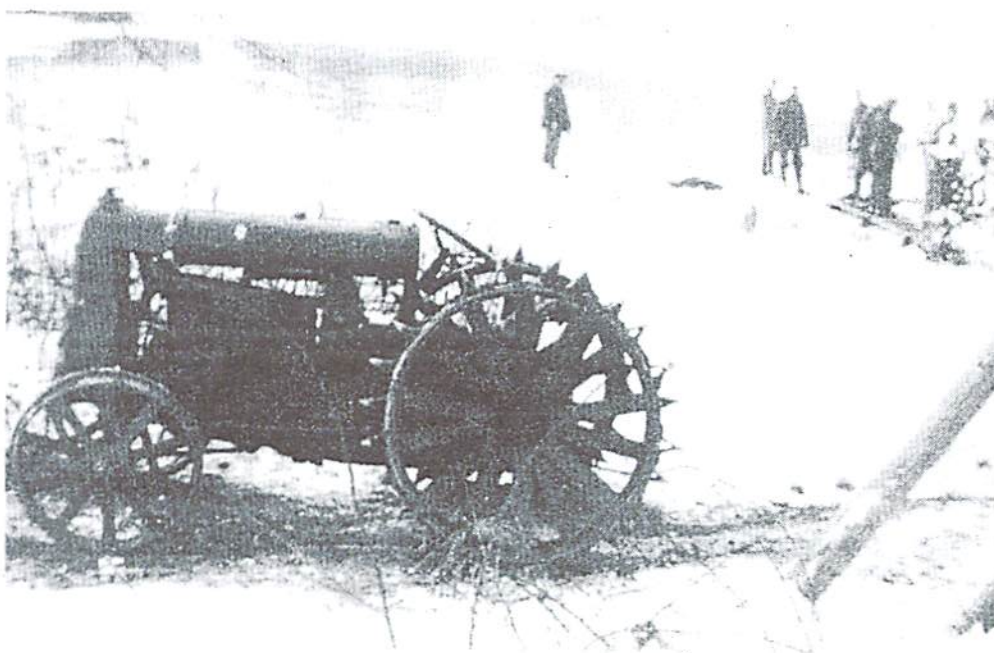


## THE ICEMAN DISAPPEARETH....



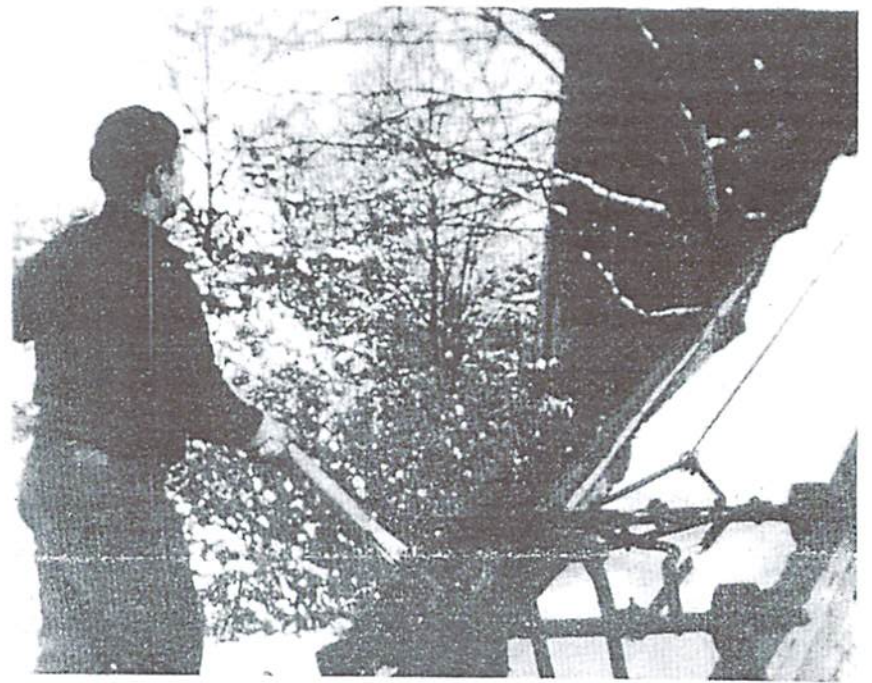
The ice was hauled up the railed ramp by a cable hitched by pulleys to a team of horses or a tractor. This early model probably belonged to Walter Prince, the elder statesman.



L to r, Harvey Morton, now in his late eighties, is a veteran of the Boer War. He has led an active outdoor life, as this photo indicates. He is a long-time resident of Bow St.

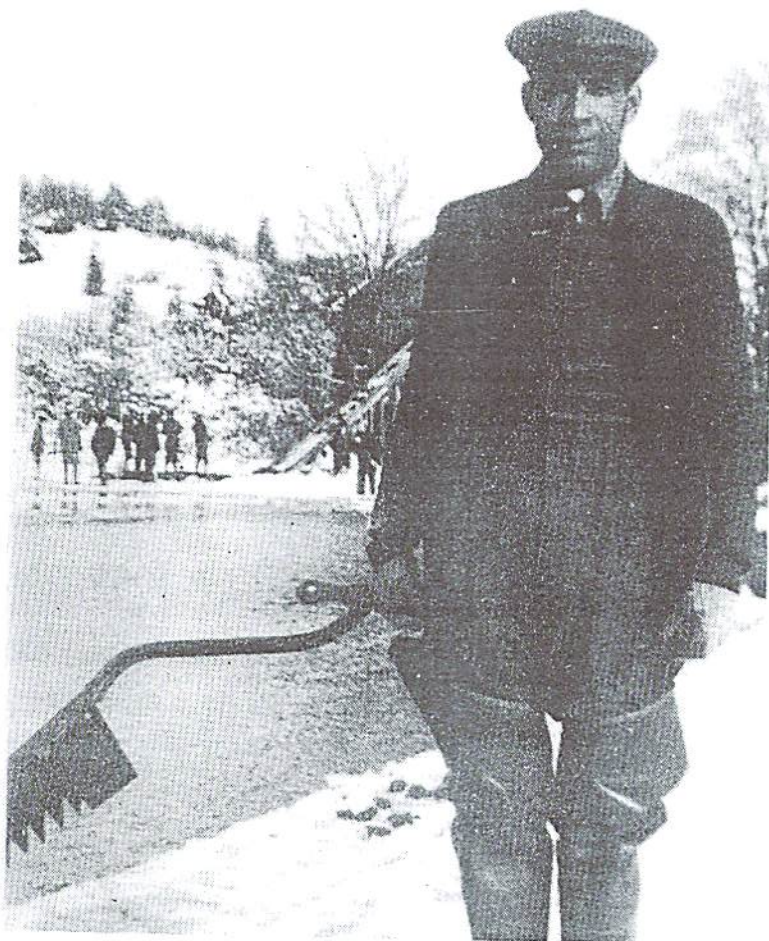
Frank Washburn, who grew up in Pembroke and Duxbury, where he still has several family ties, took over part of Soule's ice business. His present whereabouts are unknown.

Paul Swanson of Bow St. is one of the best known and most popular men in Duxbury.



Paul Swanson is holding down the back of the rig with a pike as it propels four "double cakes" up the ramp. The thickness of ice seems to be ten to 12 inches. Ideal to be snugged into the old ice-box compartments.





Manuel Andrade, born in the Cape Verde Islands, lived most of his life in Duxbury, where he was universally liked and admired for his integrity, industry, good humor and phenomenal honesty. If you knew Manuel, you knew a true gentleman.

(Note: The comments on this page were written by Philip Swanson of Hingham, brother of Paul Swanson. -- Ed.)



Behold the ramp that leads from the road to the icehouse. The "old pirate" on the left is Harvey Morton. Russell Chandler's back has a good exposure and the late Oscar Ryder is partially shown on the right.